



Marqueurs lance-flammes



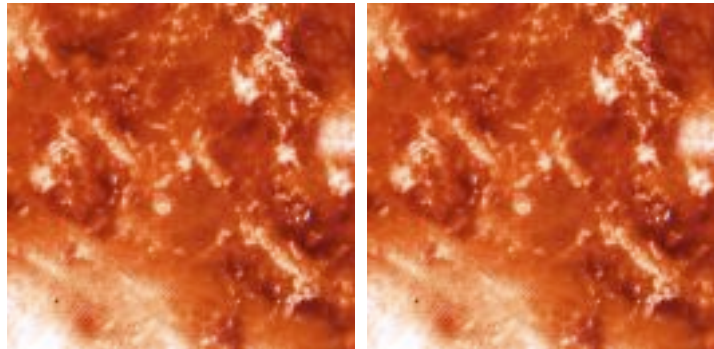
Marqueur de troupes (recto et verso)

Blessures reçues

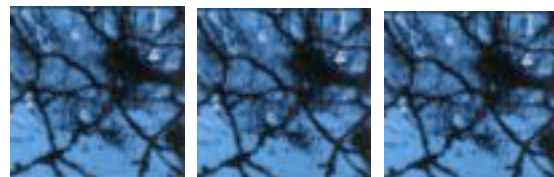
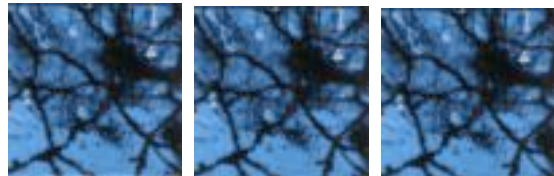


Attente

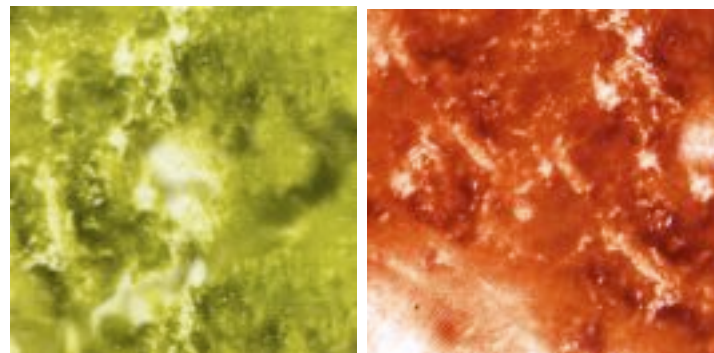
Activation



Marqueur fumigènes

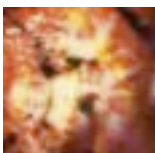


Mur effondré par usage de l'autocanon



Marqueur Acide

Puits dimensionnel



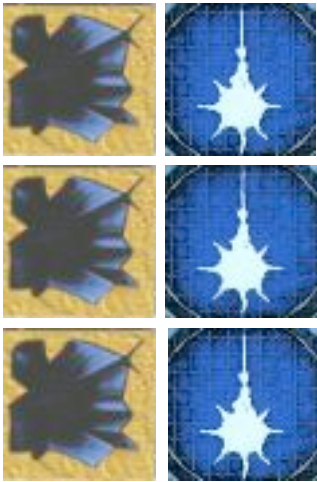
Objectifs



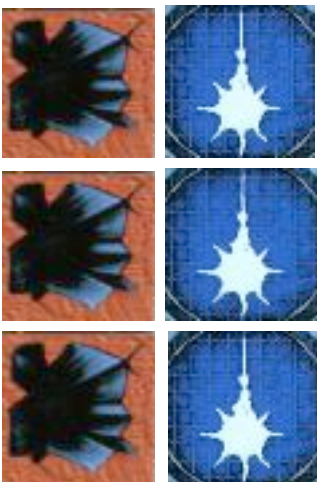


Portes (recto-verso)

Entrée de souterrain jungle (recto verso)



Entrée de souterrain canyon (recto verso)



Mine conventionnelle (recto verso)



Mine antipersonnelle (recto verso)





Tableau de déploiement jungle/grottes

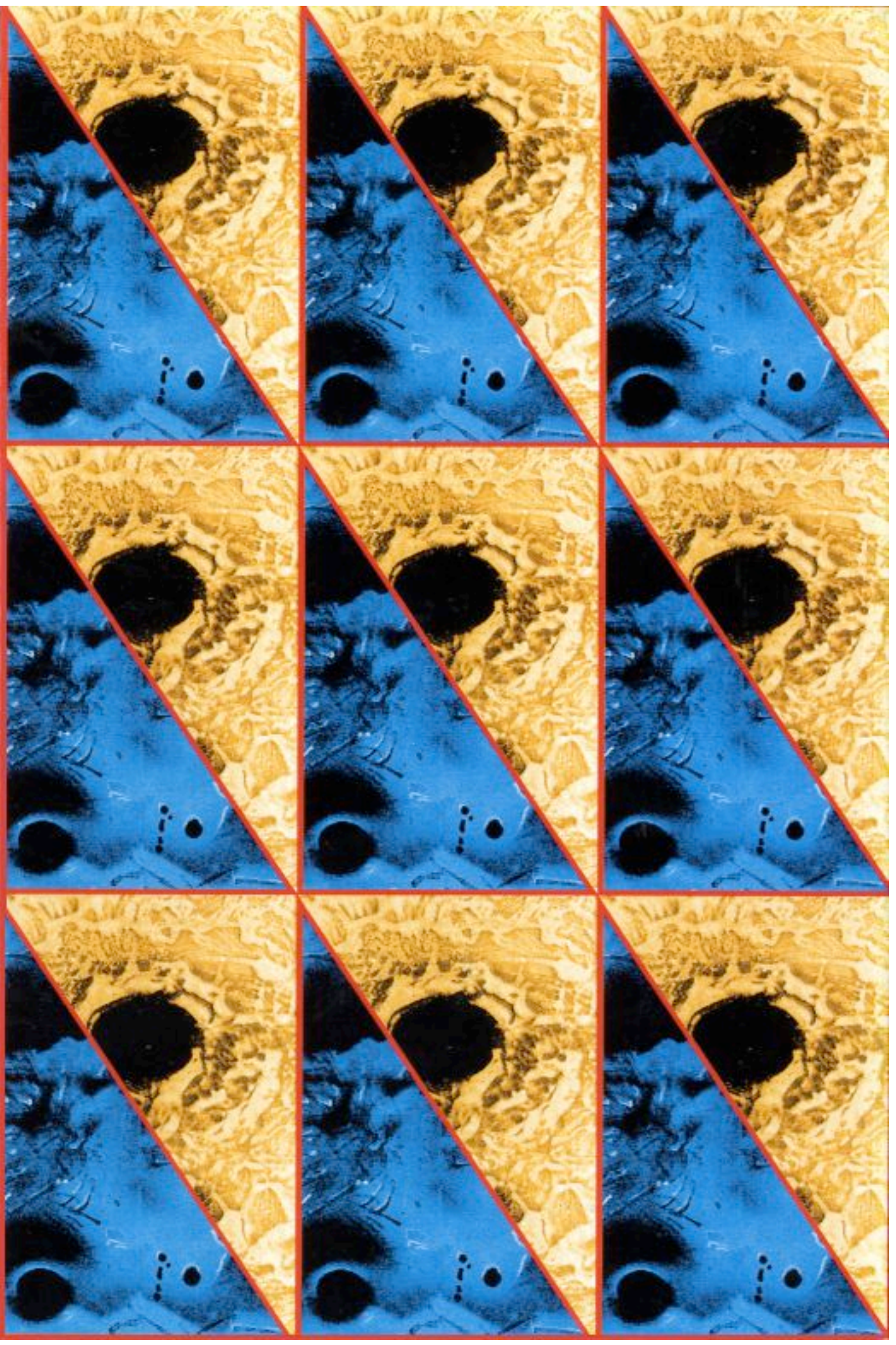




Tableau de déploiement canyon/dreadnaught

